



GAS

260L  
275L

CAPACITY

51 MJ/hr  
200 MJ/hr

INPUT

5  
YEAR

CYLINDER  
WARRANTY<sup>1</sup>

Indoor or  
Outdoor

INSTALLATION

Everhot Heavy Duty Gas is a robust commercial water heater range designed to provide between 380 and 970 litres of hot water in the first hour and 190 to 750L/hr recovery hour after hour at 50°C temperature rise.

## FEATURES

- Available in the most popular capacities of 260L / 51MJ/hr input and 275L / 200MJ/hr input
- Indoor and outdoor natural gas models available
- Direct replacement for the most popular heavy duty gas models
- Heavy duty enamel and multiple anodes<sup>2</sup> provide long service life
- Indoor 275 model has automatic flue damper reducing heat loss by up to 60% compared to AGA maximum allowance
- Hot surface ignition on 275 models
- 82°C capable for sanitising applications on 275 models
- Manifold multiple units together for greater capacity and output
- 5 year cylinder warranty<sup>1</sup>

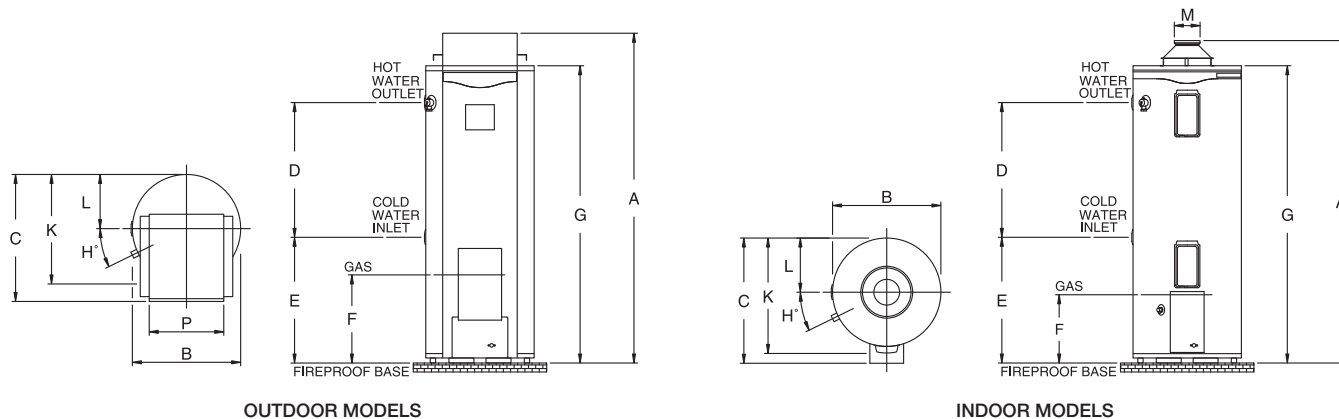
## WHY CHOOSE EVERHOT HEAVY DUTY GAS

- Made in Australia by Rheem Manufacturing
- Easiest replacement for existing manifolded heaters
- Mains pressure hot water delivery
- Full warranty backing through a national service network



DIMENSIONS AND TECHNICAL DATA TABLE		OUTDOOR MODELS		INDOOR MODELS		
Model		632 260	632 275	622 260	622 275	
Storage Capacity	litres	260	275	260	275	
Thermal Input (Natural gas)	MJ/hr	51	200	51	200	
Recovery @ 50°C rise	L/hr	190	750	190	750	
First Hour Delivery	L	380	970	380	970	
Inlet/Outlet Connections	BSPF	RP1¼	RP1¼	RP1¼	RP1¼	
Gas Connection	BSPF	RP½	RP¾	RP½	RP¾	
T&PR Valve Connection	BSPF	RP¾	RP¾	RP¾	RP¾	
T&PR Valve Setting	kPa	1000	1000	1000	1000	
Expansion Control Valve (ECV) Setting	kPa	850	850	850	850	
<b>Max. Water Supply Pressure</b>						
without ECV fitted	kPa	800	800	800	800	
with ECV fitted	kPa	680	680	680	680	
Max. Thermostat Setting	°C	65	82	65	82	
Min. Thermostat Setting	°C	off	60	off	60	
Electrical Connection		-	2m 10A plug & lead	-	2m 10A plug & lead	
Electrical Rating 240V 50Hz		-	250 Watts / 1.1 Amps	-	150 Watts / 0.65 Amps	
Maintenance Rate	MJ/day	30.7	50.7	33.9	26.1	
Weight – Empty	kg	106	197	98	187	
<b>Dimensions</b>						
	A	mm	1640	1865	1660	1895
	B	mm	590	640	590	640
	C	mm	680	780	670	780
	D	mm	990	760	990	760
	E	mm	330	700	330	700
	F	mm	295	340	297	340
	G	mm	1520	1695	1520	1695
	H	degrees	27	36	27	36
	K	mm	655	722	655	722
	L	mm	295	320	295	320
	M	mm	-	-	100	200
	P	mm	420	320	-	-

Technical data is subject to change.



<sup>1</sup> Everhot Heavy Duty Gas Warranty: 5 Year cylinder warranty, 1 Year parts and labour on all other components in commercial installations. Conditions apply. See the Everhot warranty set out in the Owner's Guide and Installation Instructions or view online at [www.reece.com.au/plumbing/products/hotwaterunits/everhot](http://www.reece.com.au/plumbing/products/hotwaterunits/everhot)

<sup>2</sup> Black anode suitable up to 600mg/L Total Dissolved Solids only available

\* Registered Trademark of Rheem Australia Pty Ltd. Materials and data are subject to change without notice.