



SOLAR HOT WATER SOLUTIONS | stainless steel roof systems



COMES ON STEADY, HOT AND STRONG

INSTALL A



## RHEEM. SINCE 1937.

Rheem has been manufacturing in Australia since 1937. Over seventy-five years later, Rheem is a household name and is as much a part of the fabric of Australian life as backyard cricket, the great Aussie barbecue and lamingtons.

Today we are the largest appliance manufacturer in Australia, manufacturing over 70% of all Australian made water heaters.

The nation's - and world's - focus on renewable solutions has also seen Rheem develop its next generation water heaters. We have played a major role in facilitating the transition in Australia to more energy efficient and environmentally friendly water heating solutions.



Australian designed  
& manufactured



## SAVE ON HOT WATER ENERGY USE

A Rheem stainless steel hot water system is an excellent environmental and financial investment. It can significantly reduce fossil fuel energy use and consequent pollution and greenhouse gas emissions.

Not only are you helping the environment by installing a Rheem stainless steel solar hot water system, you could also enjoy substantial savings on your household hot water energy use of up to 73%. If your home is in the tropics, you could save up to 85% of your hot water energy use\*.



Rheem | The Stainless Steel Hot Water Specialists.

COMES ON STEADY, HOT AND STRONG

## SAVE MORE WITH GOVERNMENT INCENTIVES

The Federal Government has a small scale Renewable Energy scheme whereby eligible solar water heaters are entitled to a number of Small Scale Technology Certificates (STCs).

These incentives can reduce your initial investment making a Rheem hot water system not only a good choice for the environment but also for your pocket.

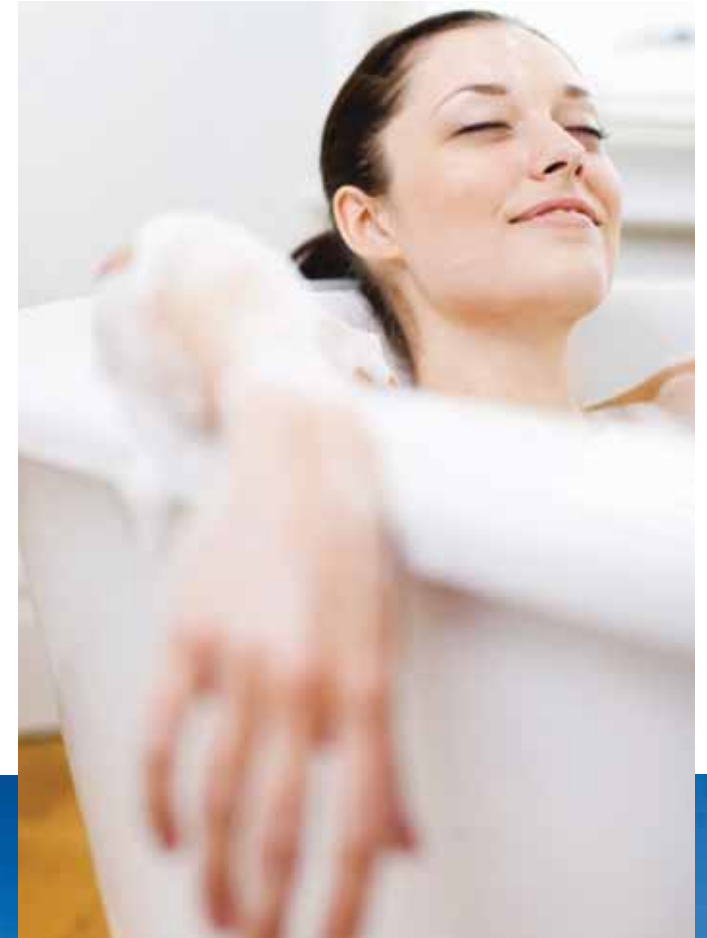
Ask your local Rheem Solar Specialist how much you will save.



## INTEREST FREE OPTIONS

Rheem offers you interest free options so you can enjoy all the benefits of owning a Rheem solar water heater TODAY whilst paying for your system over time – INTEREST FREE.

Ask your local Rheem Solar Specialist for more information.



\* Energy and greenhouse gas emissions reduction of up to 73% based on Australian Government Approved TRNSYS simulation modelling and apply when replacing an electric water heater in Zone 3. Energy savings of up to 85% based on Zone 1 modelling. Any financial savings will vary depending on type of Rheem Solar system installed, orientation and inclination of the solar collectors, type of water heater being replaced, hot water consumption and fuel tariff. Maximum financial savings off your hot water bill are achievable when replacing an electric water heater on continuous tariff.

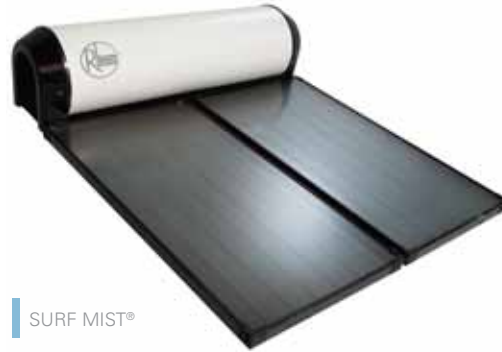


INSTALL A

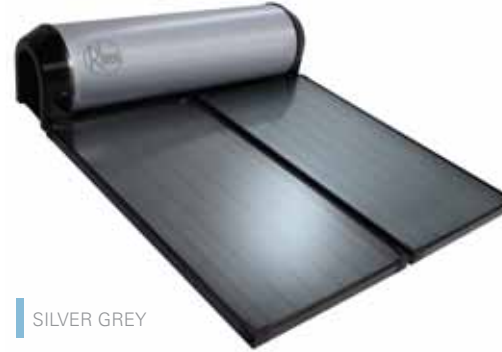




SEVEN COLORBOND® STEEL COLOURS



SURF MIST®



SILVER GREY



WOODLAND GREY®



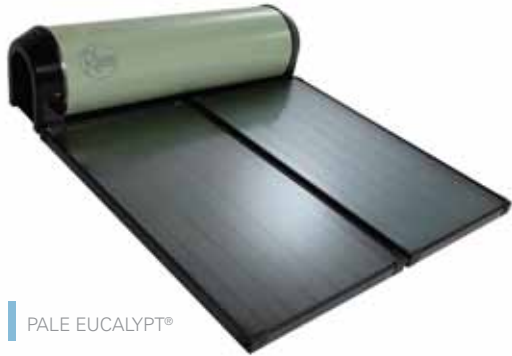
**THE RHEEM  
STAINLESS STEEL ADVANTAGE**

The storage cylinders for all Rheem roof-mounted hot water systems are made of quality stainless steel which acts as a natural barrier to corrosion. Most conventional water heaters are made of steel which requires a sacrificial anode for protection whereas the anti-corrosive properties of stainless steel mean that an anode is not necessary – therefore they require less maintenance.

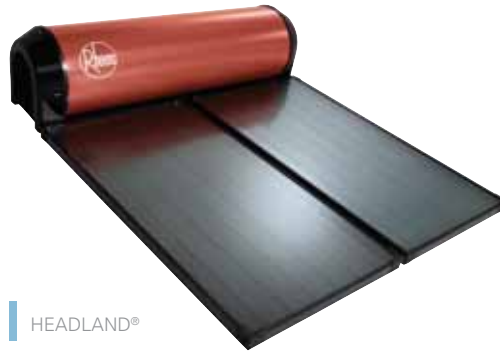
Stainless steel is prominent in most kitchens for its purity, aesthetics, ease of maintenance and corrosion resistance. It is reassuring to know that inside every Rheem roof-mounted storage cylinder your hot water is kept in a hygienic environment ready for your family's everyday hot water needs.

Stunning colour on the outside | Superior Stainless Steel on the inside.

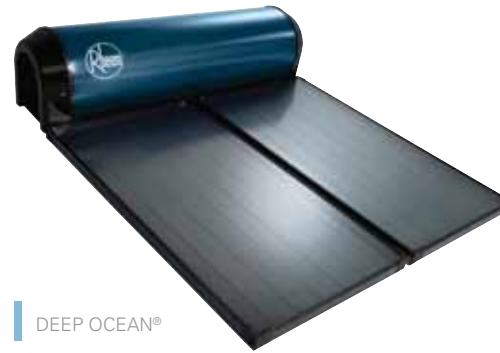
COMES ON STEADY, HOT AND STRONG



PALE EUCALYPT®



HEADLAND®



DEEP OCEAN®



NIGHT SKY®

### SEVEN CONTEMPORARY COLORBOND® STEEL COLOURS

The outer casing of every Rheem storage tank is constructed from weatherproof COLORBOND® steel. Rheem offer a choice of seven contemporary COLORBOND® steel colours with their modern design roof mounted range.

This colour choice allows you to choose a system which will complement your roof and blend with your home's aesthetics, at no additional cost.

Colours shown may vary slightly from actual COLORBOND® steel colour.

### **RHEEM 7 AND 10 YEARS WARRANTY.<sup>1</sup>**

Our roof-mounted storage systems come with either a 7 or 10 year cylinder and collector warranty depending on the model you choose. As further support Rheem has in place easily accessed service providers. These experienced technical personnel are authorised to provide you with whatever service your Rheem hot water system may require.

Just one call to 1300 339 2737 is all it takes.

### **RL SERIES – THE NON FROST SYSTEM**

If your home is in a temperate or tropical location, which is not subject to frost and you have good quality drinking water, then the Rheem RL Series system is ideal. This system operates on the natural thermosiphon principle, i.e. when water is heated it rises. The RL Series system directly heats the water as it passes through the collectors and then automatically circulates it back into the storage tank. This process continues whilst the sun is shining, giving you and your family ample hot water.

### **RLX SERIES – THE FROST PROTECTED SYSTEM**

Designed for areas which experience frost or snow. It uses the highly efficient heat transferring properties of a special anti-freeze fluid to transfer the absorbed energy to heat the water indirectly.

With an 'indirect system' water does not pass through the collector panels, instead the anti-freeze mixture is circulated from the collectors through a stainless steel heat exchanger, transferring the heat into the water.

The benefit of this 'indirect' heat exchange process is that the system can be used confidently in frost areas, without risking damage to the system; it offers protection against damage in freezing conditions.



## AUSTRALIS COLLECTOR

The Australis Series is our largest selling collector. Designed to supply you and your family abundant hot water, the Australis collector is solidly constructed from high grade copper and aluminium, and is housed in a durable COLORBOND® steel tray.

## TITAN – THE ULTIMATE COLLECTOR

The Titan Series collector is designed especially for high performance. Rheem has taken advantage of the latest advances in heat-transfer technology to build superior solar collectors to gather as much of the sun’s energy as required. The Titan Series collector uses an advanced titanium coated copper solar absorber plate combining first grade copper with titanium, to show superior qualities in solar performance when compared with other solar collectors available.

## WHICH SYSTEM SUITS YOU

Which system you choose will depend on where in Australia you live, which way your home faces and even the pitch of your roof. So it’s important to talk to your local Rheem Solar Specialist about the Rheem hot water system which is ideal for you.

There will be days during the year when your solar system doesn’t receive sufficient energy from the sun to provide all the hot water you need.

Rheem gives you the option to have either an in tank electric element booster or a gas in-line continuous flow boosting unit. The choice is yours; ask your local Rheem Solar Specialist which option would be best suited to you.

**LATEST SOLAR COLLECTOR TECHNOLOGY** ●  
for superior performance and quality

		Frost Areas	Water Quality	Warranty <sup>1</sup>	Solar Contribution Area		
					Low	Medium	High
RL Series Systems	Australis	Not Suitable	Potable	7 years	Not Suitable	✓	✓
	Australis 10	Not Suitable	Potable	10 years	Not Suitable	✓	✓
	Titan	Not Suitable	Potable	10 years	✓	✓	◆
RLX Series Systems	Australis	✓	Potable	7 years	Not Suitable	✓	✓
	Australis 10	✓	Potable	10 years	Not Suitable	✓	✓
	Titan	✓	Potable	10 years	✓	✓	◆

◆ May not be suitable for all applications. Please consult your Rheem dealer for more details.

Rheem | Solar Excellence.

COMES ON STEADY, HOT AND STRONG





**RANGE OF STORAGE CYLINDER**  
colours and sizes to suit your home

	Units	RL180	RL305	RLX180	RLX305
<b>STORAGE CYLINDER</b>					
Capacity	litres	180	305	177	294
Outside Dimensions	mm	571 x 1215	571 x 1905	571 x 1215	571 x 1905
Weight – Full <sup>2</sup>	kg	228	377	230	373
Weight – Empty	kg	48	72	53	79
Max Inlet Pressure	kPa	550	550	550	550
Insulation – Thickness	mm	47	47	47	47
<b>TOTAL SYSTEM</b>					
Dimensions – Area on roof	mm	2562 x 1615	2562 x 2494	2562 x 1615	2562 x 2494
No. of Collectors (Typical)		1	2	1	2
Weight – Full <sup>2</sup>	kg	267	454	277	455
Weight – Empty <sup>2</sup>	kg	85	145	98	157

Warranty Duration <sup>1</sup>	Cylinder	Collector	Spare Parts	Labour
RL/ RLX Australis Series	7 years	7 years	1 year	1 year
RL/ RLX Australis 10 Series	10 years	10 years	5 years	5 years
RL/ RLXTitan Series	10 years	10 years	5 years	5 years

<b>Titan Collector</b>			
Aperture (heating) area		m <sup>2</sup>	1.86
Dimensions	length	mm	1941
	width	mm	1027
	height	mm	84
Capacity		litres	1.5
Weight	empty	kg	34
	full	kg	35.5
Working pressure		kPa	1400
Absorber surface	Blue sputtered selective		
Absorber material	Copper		
Riser material	Copper Tube		
Number of risers	7		

<b>Australis Collector</b>			
Aperture (heating) area		m <sup>2</sup>	1.86
Dimensions	length	mm	1941
	width	mm	1027
	height	mm	84
Capacity		litres	1.5
Weight	empty	kg	34
	full	kg	35.5
Working pressure		kPa	1400
Absorber surface	Black polyester powder coat		
Absorber material	Aluminium		
Riser material	Copper Tube		
Number of risers	7		

Visit [www.rheem.com.au](http://www.rheem.com.au) or phone 1300 765 277 to find your nearest Rheem Solar Specialist.

<sup>1</sup>For full details refer to the Rheem Warranty Guidelines in the Owner's Manual or at [www.rheem.com.au/warranty](http://www.rheem.com.au/warranty)

<sup>2</sup>Total system weight calculated using Australis Collectors



This publication is printed, using green energy, onto paper stock which is totally chlorine free and manufactured from pulp sourced from plantation grown timber. Both paper manufacturer and printer are approved to the highest environmental standards.

**[www.rheem.com.au](http://www.rheem.com.au)**

ABN: 21 098 823 511

Re-order Code: MKT-BR-RD-ST-0213  
(February 2013)

For sales assistance call:  
1300 SOLARS  
1300 765 277 (Australia only)

For service assistance call:  
1300 339 273 (Australia only)

Your local Rheem Solar Specialist:



® Registered trademark of Rheem Australia Pty Ltd.

® COLORBOND® is a registered trademark of BlueScope Steel Limited



COMES ON STEADY, HOT AND STRONG

INSTALL A

